

# MATLAB<sup>®</sup> Builder for COM Release Notes

---

These Release Notes summarize the changes introduced in the latest version of MATLAB Builder for COM.

The following topics are discussed in these Release Notes.

- “Bugs Fixed in This Release” on page 1-2

If you are upgrading from an earlier release, you should also see

- “MATLAB Builder for COM 1.1.3 Release Notes” on page 2-1
- “MATLAB Builder for COM 1.1.2 Release Notes” on page 3-1
- “MATLAB Builder for COM 1.1.1 Release Notes” on page 4-1
- “MATLAB Builder for COM 1.1 Release Notes” on page 5-1
- “MATLAB Builder for COM 1.0 Release Notes” on page 6-1

## **Printing the Release Notes**

If you would like to print the Release Notes, you can link to a PDF version.



**1** | **MATLAB Builder for COM 1.1.4 Release Notes**

---

Bugs Fixed in This Release ..... 1-2

**2** | **MATLAB Builder for COM 1.1.3 Release Notes**

---

Bugs Fixed in This Release ..... 2-2

**3** | **MATLAB Builder for COM 1.1.2 Release Notes**

---

Bugs Fixed in This Release ..... 3-2

Known Software and Documentation Problems ..... 3-3

**4** | **MATLAB Builder for COM 1.1.1 Release Notes**

---

Known Software and Documentation Problems ..... 4-2

**5** | **MATLAB Builder for COM 1.1 Release Notes**

---

New Features ..... 5-2

Product Name Change .....	5-2
Changes to Screens .....	5-2

## **MATLAB Builder for COM 1.0 Release Notes**

---

# **6**

<b>Introduction to MATLAB Builder for COM .....</b>	<b>6-2</b>
---	------------

# MATLAB Builder for COM 1.1.4 Release Notes

---

**Bugs Fixed in This Release** . . . . . 1-2

## **Bugs Fixed in This Release**

- When `comtool` is used to create a deployment package that contains a COM builder component bundled with the MCR installer, the COM component fails to install on the target machine if, during the MCR installation, you do not select the default directory.

This problem has been fixed in Version 1.1.4.

# MATLAB Builder for COM 1.1.3 Release Notes

---

**Bugs Fixed in This Release** . . . . . 2-2

## Bugs Fixed in This Release

- A MATLAB Builder for COM component fails to correctly pass an output variable containing a structure within a structure to the client code.
- A MATLAB Builder for COM component returns a complex output variable as an empty variant to the client application.
- Event handling not working for MATLAB Builder for COM in R14.

In R14 event handling did not work for MATLAB Builder for COM components. Consequently, calls to M-functions containing the `%#event` pragma were not properly dispatched to the Visual Basic callback implementation. The MCR issues callbacks on a thread different from the caller's thread, and Visual Basic does not support the execution of callbacks on any thread other than the main thread of the application. Now, when a COM object is compiled with events, a simple proxy is inserted between the caller and the COM object that ensures callbacks are always executed on the same thread as the original call. COM objects compiled without events continue to work as before.



# MATLAB Builder for COM 1.1.2 Release Notes

---

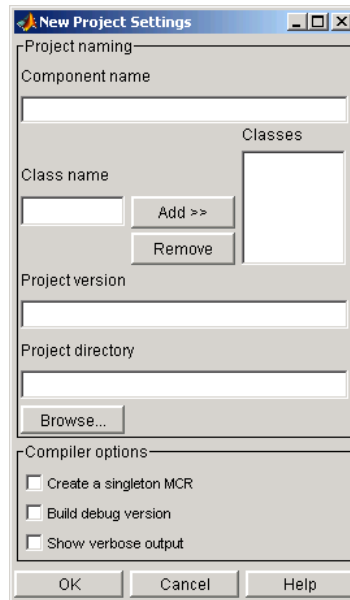
<b>Bugs Fixed in This Release</b> . . . . .	3-2
<b>Known Software and Documentation Problems</b> . . . . .	3-3

## Bugs Fixed in This Release

The following software problem that was reported in Release 1.1.1 has been fixed in MATLAB Builder for COM Release 1.1.2.

- MATLAB figure windows hang when brought up through a MATLAB Builder for COM-created COM component.

This bug has been fixed via a change on the **New Project Settings** menu. On the **New Project Settings** menu, the **Create a singleton MCR** option tells the MATLAB Compiler to generate code such that it creates only one instance of the MCR per component/DLL.



That is, if a user selects this option while creating the component and uses this component in a Visual Basic application, every instance of the component does not result in the creation of a new MCR. Instead, each instance uses the same MCR.

## Known Software and Documentation Problems

The following software and documentation problems are known to exist in MATLAB Builder for COM Release 1.1.2.

- Event handling not working for MATLAB Builder for COM in R14.  
Event handling is not working for MATLAB Builder for COM in R14. Consequently, the example on page 3-6 in the MATLAB Builder for COM documentation on handling events fails to work in R14. The example worked in previous versions of the product.
- Complex numbers are passed as empty variants from a MATLAB Builder for COM-generated COM component to a client.
- When a MATLAB Builder for COM-generated packaged component is deployed to a machine that does not have MATLAB installed, users receive the following error message when MCRInstaller is installed with the package:

```
LoadLibrary (<Component name>) failed - The specified module could not be found
```

As a workaround, register the COM component manually using the regsvr32 utility. To do this enter

```
regsvr32 <componentname>.dll
```

at the Windows Command Prompt.

Verify that the current working directory is the one that contains the MATLAB Builder for COM-generated component



# MATLAB Builder for COM 1.1.1 Release Notes

---

**Known Software and Documentation Problems . . . . . 4-2**

## Known Software and Documentation Problems

The following software and documentation problems are known to exist in MATLAB Builder for COM Release 1.1.1.

- MATLAB figure windows hang when brought up through a MATLAB Builder for COM-created COM component.  
MATLAB figure windows hang when brought up through a MATLAB Builder for COM created COM component. You have to use the task manager to dismiss the window. Clicking on the 'X' does not dismiss the window.
- Event handling not working for MATLAB Builder for COM in R14.  
Event handling is not working for MATLAB Builder for COM in R14. Consequently, the example on page 3-6 in the MATLAB Builder for COM documentation on handling events fails to work in R14. The example worked in previous versions of the product.
- Complex numbers are passed as empty variants from a MATLAB Builder for COM-generated COM component to a client.
- When a MATLAB Builder for COM-generated packaged component is deployed to a machine that does not have MATLAB installed, users receive the following error message when MCRInstaller is installed with the package:

```
LoadLibrary (<Component name>) failed - The specified module could not be found
```

As a workaround, register the COM component manually using the regsvr32 utility. To do this enter

```
regsvr32 <componentname>.dll
```

at the Windows Command Prompt.

Verify that the current working directory is the one that contains the MATLAB Builder for COM-generated component

# MATLAB Builder for COM 1.1 Release Notes

---

<b>New Features</b> . . . . .	5-2
Product Name Change . . . . .	5-2
Changes to Screens . . . . .	5-2

## **New Features**

### **Product Name Change**

This product was previously named MATLAB COM Builder.

### **Changes to Screens**

Various screens within this product have been changed for consistency with similar products. The functionality is unchanged from previous releases.



# MATLAB Builder for COM 1.0 Release Notes

---

**Introduction to MATLAB Builder for COM . . . . . 6-2**

## Introduction to MATLAB Builder for COM

---

**Note** The MATLAB Builder for COM is a new product first introduced in Release 13.

---

The MATLAB Builder for COM 1.0 is an extension to the MATLAB Compiler that enables customers to automatically convert MATLAB applications to Common Object Model (COM) objects. Developers can do modeling and analysis in MATLAB and convert the models to ready-to-use COM objects. These objects can be immediately integrated with any COM-based application.